

Stokes 159



This image is for advertising purposes only and does not form part of any Contract

STOKES 159

Bed: 3 Bath: 2 Car: 2

BEDROOMS:

MASTER: 3400 x 3600

BED 2: 3530 x 3000

BED 3: 3000 x 2800

LIVING AREAS:

LIVING: 4880 x 5200

GARAGE: 5700 x 5900

OUTDOOR:

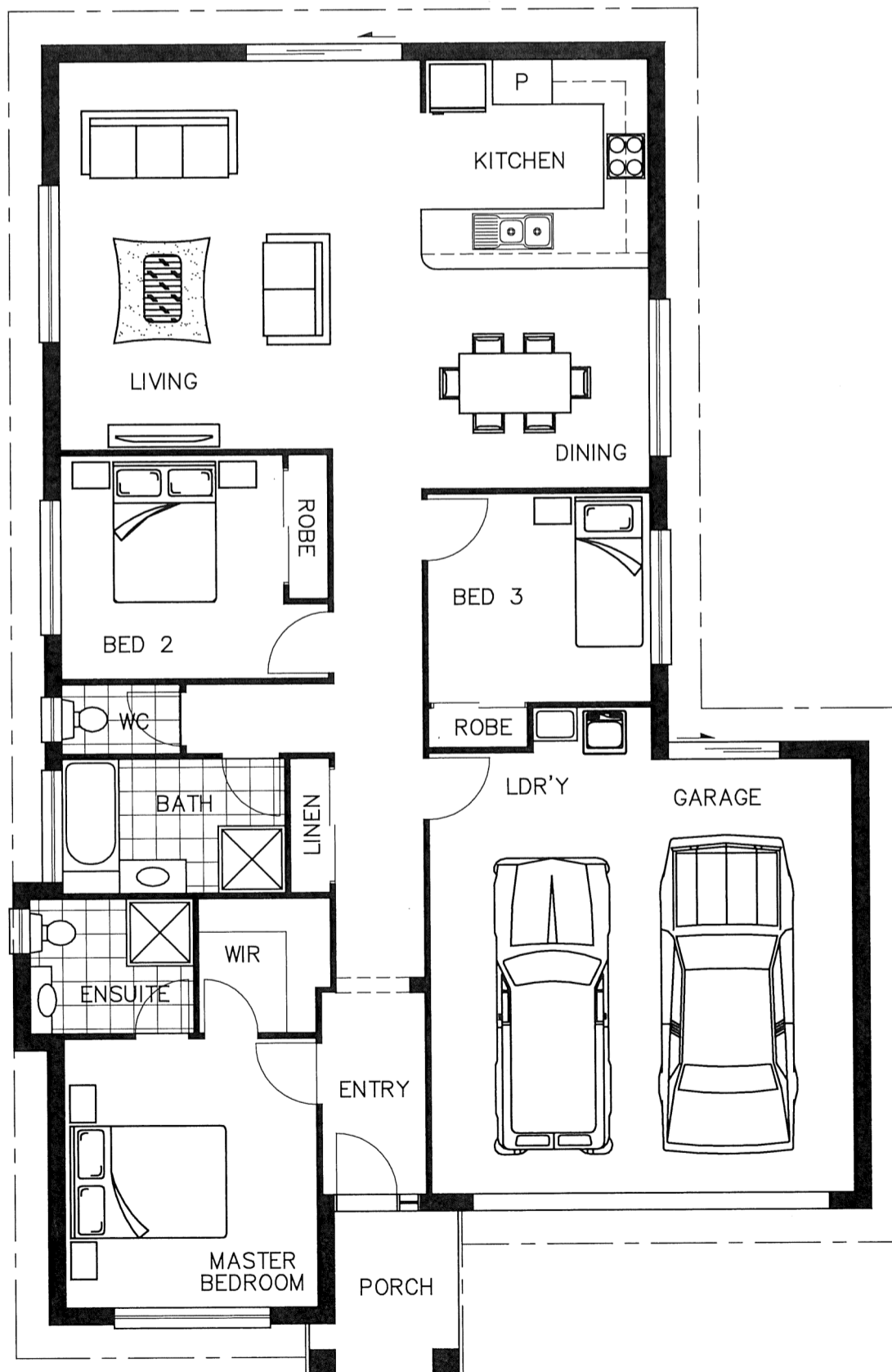
ALFRESCO

FLOOR AREA:

TOTAL: 158.71m² (17.08sq)

Width: 11090mm

Depth: 17130mm



QBCC: 1274453

This presentation is for advertising purposes only and does not form part of any Contract. Due to Wide bay Homes product development we reserve the right to alter designs, specifications and prices without notice. This Design is subject to ©Copyright and can not be copied in whole or in part.

OFFICE: 434 The Esplanade, Torquay Ph: 07 4128 9979 Email: sales@widebayhomes.com.au

www.widebayhomes.com.au